

Scratched Scleral Rigid Gas Permeable (RGP) Lens

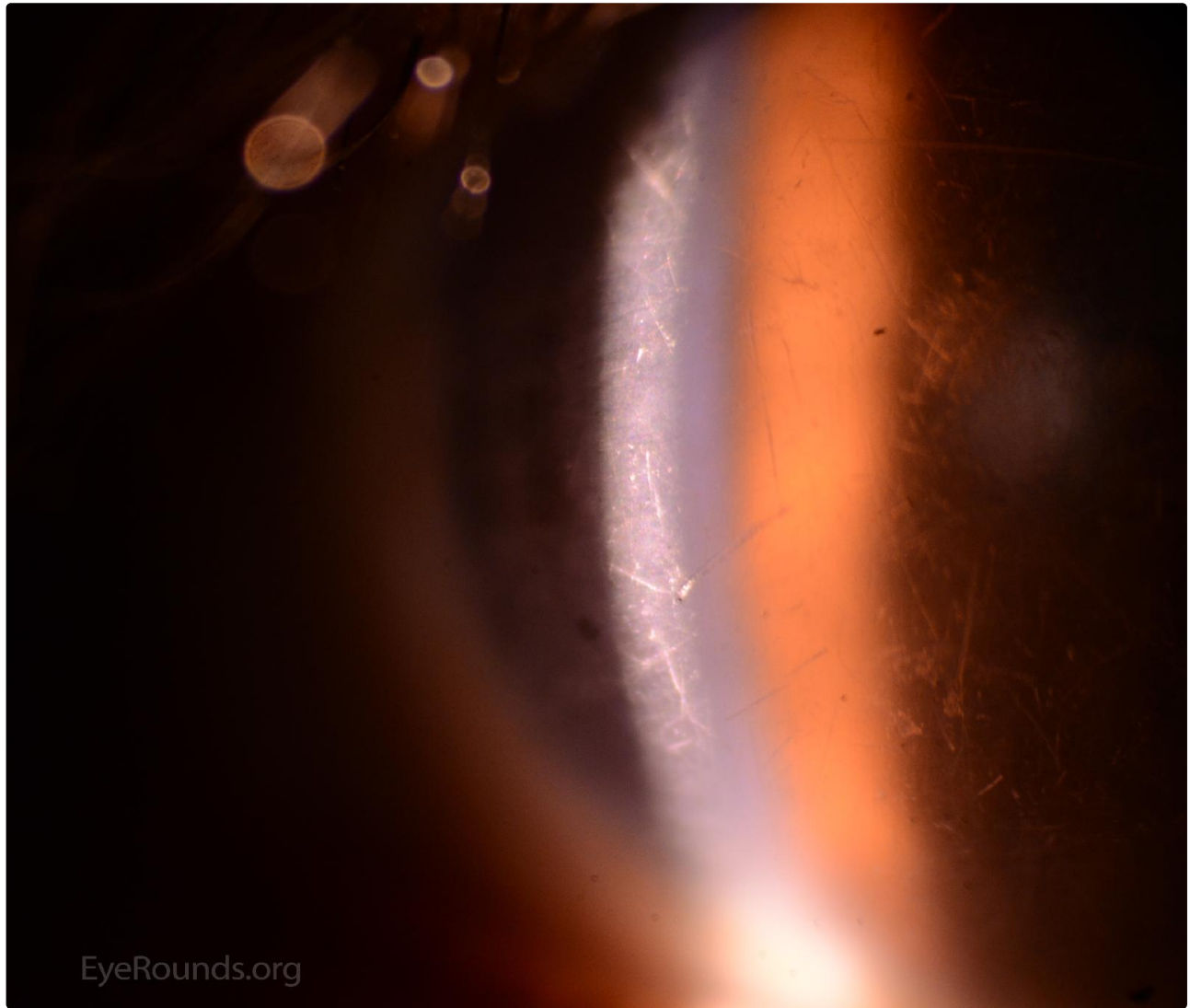
Category(ies): [Contact Lens](#)

Contributor: [Tressa Larson, OD, FAAO](#)

Photographer: Tressa Larson, OD, FAAO



The most likely cause of scratches in any type of contact lens is cleaning. Scratches occur when using abrasive cleaners, with excessive rubbing, rough fingers, and dirty hands. All can result in decreased comfort and vision.

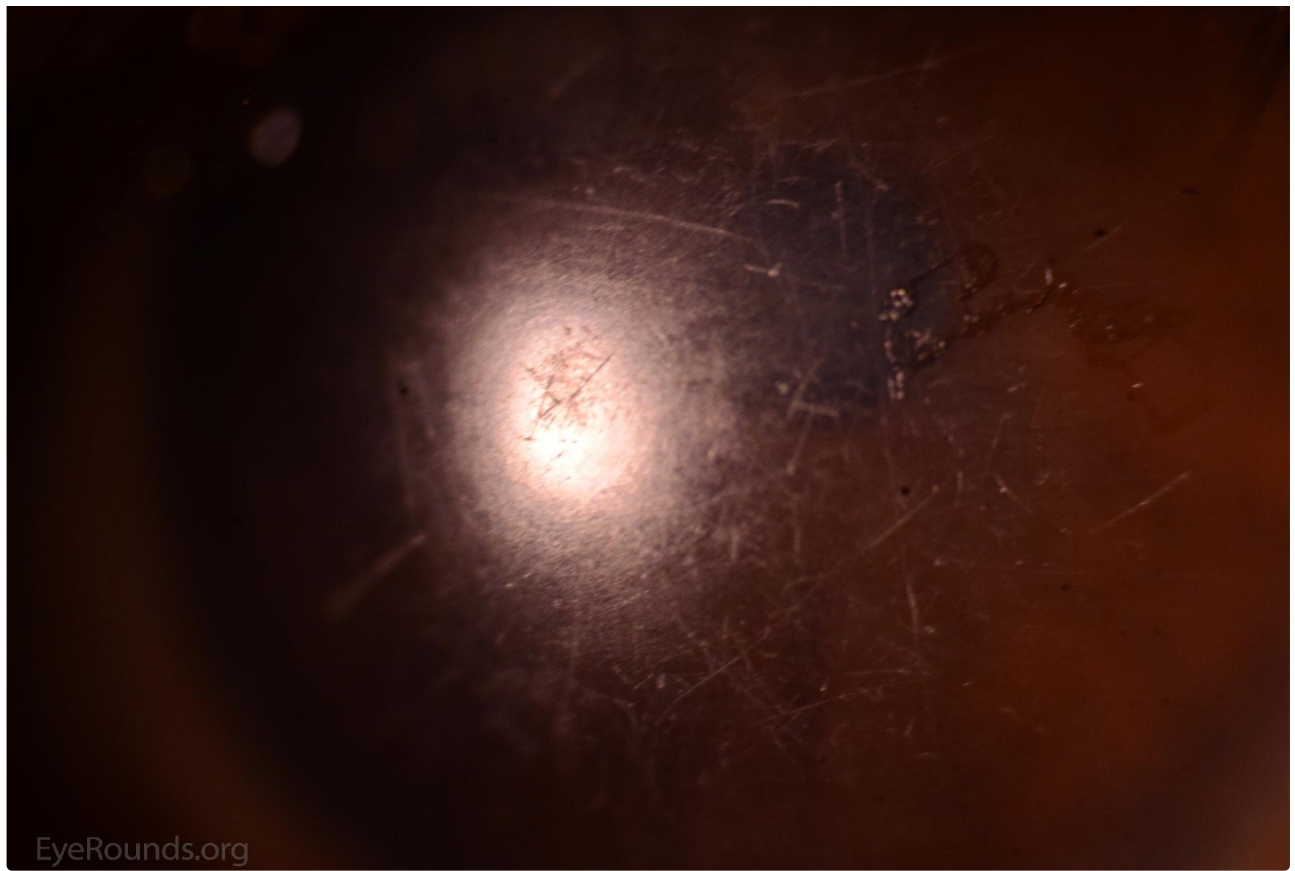


EyeRounds.org

[Enlarge](#)

[Download](#)





EyeRounds.org

 Enlarge

 Download

Image Permissions:



Ophthalmic Atlas Images by [EyeRounds.org](https://www.eyerounds.org), [The University of Iowa](https://www.theuniversityofiowa.edu) are licensed under a [Creative Commons Attribution-NonCommercial-NoDerivs 3.0 Unported License](https://creativecommons.org/licenses/by-nc-nd/3.0/).

Address

University of Iowa
Roy J. and Lucille A. Carver College
of Medicine
Department of Ophthalmology and
Visual Sciences
200 Hawkins Drive
Iowa City, IA 52242

[Support Us](#)

Legal

Copyright © 2019 The University of
Iowa. All Rights Reserved
[Report an issue with this page](#)
[Web Privacy Policy](#) |
[Nondiscrimination Statement](#)

Related Links

[Cataract Surgery for Greenhorns](#)
[EyeTransillumination](#)
[Gonioscopy.org](#)
[Iowa Glaucoma Curriculum](#)
[Iowa Wet Lab](#)
[Patient Information](#)
[Stone Rounds](#)
[The Best Hits Bookshelf](#)

EyeRounds Social Media

Follow



Receive notification of new cases,
[sign up here](#)
[Contact Us](#)
[Submit a Suggestion](#)